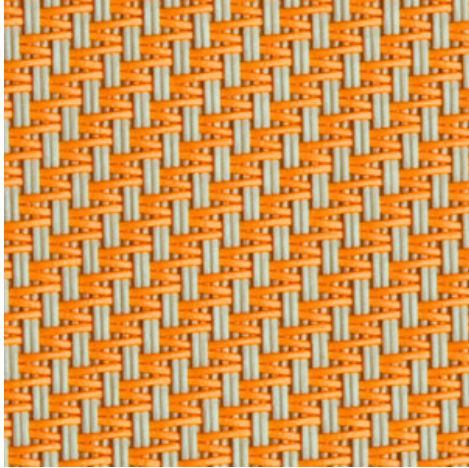


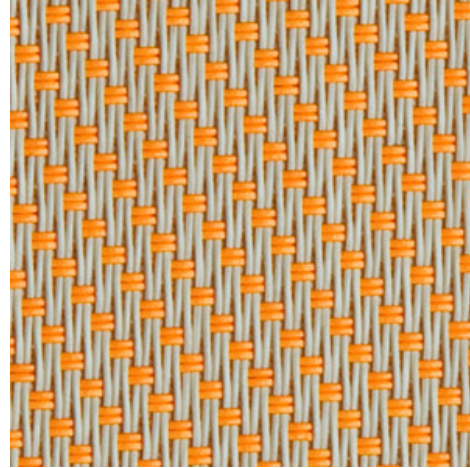
Serge 600 - pearl grey | gold (007004)

Technical info

FRONT



BACK



<b>Widths</b>		220 cm   250 cm   270 cm   320 cm
<b>Composition</b>		Fibreglass 42% - PVC 58%
<b>Openness factor</b>	NBN EN 410	5.00%
<b>Weight</b>	NF EN 12127	535.00 g/m <sup>2</sup>
<b>Thickness</b>	ISO 5084	0.55 mm
<b>Density</b>	ISO 7211/2	WARP 18.00 yarn/cm      WEFT 14.00 yarn/cm
<b>Color fastness to artificial light</b>	ISO 105 B02	>7
<b>Color fastness to artificial weathering</b>	ISO 105 B04	>7
<b>Air permeability</b>	ISO 9237	580.00 l/m <sup>2</sup> /s
<b>Roll length</b>		50 m / 30 m for all widths > 270 cm
<b>Cleaning</b>		With soapy water
<b>Confection</b>		By heat, high frequency or ultrasonic welding
<b>Fire classification</b>		
└ Europe	UNE-EN 13501-1:2007	C-s3, d0
└ France	NF P92-503	M1
└ Italy	UNI 9177	Class 1
└ Germany	DIN 4102	B1
└ UK	BS 5867	C
└ USA	NFPA 701	FR

Serge 600 - pearl grey   gold (007004)		Technical info	
<b>Tear strength</b>	ISO 4674-1 methode 2		
↳ Original		WARP 8.50 daN	WEFT 7.50 daN
↳ After climatic chamber +30°C		WARP 7.80 daN	WEFT 7.50 daN
↳ After climatic chamber +70°C		WARP 8.20 daN	WEFT 7.20 daN
<b>Elongation up to break</b>	ISO 1421		
↳ Original		WARP 3.10 %	WEFT 2.75 %
↳ After color fastness to artificial light		WARP 4.00 %	WEFT 2.90 %
↳ After colour fastness to artificial weathering		WARP 3.50 %	WEFT 2.80 %
↳ After climatic chamber +30°C		WARP 3.00 %	WEFT 2.50 %
↳ After climatic chamber +70°C		WARP 2.85 %	WEFT 2.50 %
<b>Breaking strength</b>	ISO 1421		
↳ Original		WARP 260.00 daN/5cm	WEFT 225.00 daN/5cm
↳ After color fastness to artificial light		WARP 240.00 daN/5cm	WEFT 220.00 daN/5cm
↳ After colour fastness to artificial weathering		WARP 240.00 daN/5cm	WEFT 225.00 daN/5cm
↳ After climatic chamber +30°C		WARP 225.00 daN/5cm	WEFT 200.00 daN/5cm
↳ After climatic chamber +70°C		WARP 180.00 daN/5cm	WEFT 185.00 daN/5cm

**Front - Interior**

Serge 600 - pearl grey | gold (007004)

**Visual properties**

<b>Tv = Visual light transmittance</b>	7.80%
<b>Tuv = UV transmittance</b>	6.20%

**Solar energetic properties**

<b>As = Solar absorptance</b>	49.30%
<b>Rs = Solar reflectance</b>	40.80%
<b>Ts = Solar transmittance</b>	9.90%

**Fabric + glazing: G-factor**

	<b>G</b>	<b>Te</b>	<b>Qi</b>	<b>SC</b>
<b>Glazing A</b>	0.49	0.08	0.40	0.57
<b>Glazing B</b>	0.49	0.07	0.42	0.65
<b>Glazing C</b>	0.44	0.05	0.38	0.74
<b>Glazing D</b>	0.27	0.03	0.24	0.85

G = Total solar energy transmittance / Te = Direct solar transmittance / Qi = Secondary heat transfer factor / SC = Shading coefficient

**Visual comfort**

<b>Normal solar transmittance</b>	Class 3	Good effect
<b>Glare control</b>	Class 1	Little effect
<b>Privacy night</b>	Class 1	Little effect
<b>Visual contact with the outside</b>	Class 3	Good effect
<b>Daylight utilisation</b>	Class 1	Little effect

**Thermal comfort G-factor = Total solar energy transmittance**

<b>Glazing A</b>	<b>Glazing B</b>	<b>Glazing C</b>	<b>Glazing D</b>
Class 1	Class 1	Class 1	Class 2

**Thermal comfort Qi-factor = Secondary heat transfer factor**

<b>Glazing A</b>	<b>Glazing B</b>	<b>Glazing C</b>	<b>Glazing D</b>
Class 0	Class 0	Class 0	Class 1

Class 0 = Very little effect / 1 = Little effect / 2 = Moderate effect / 3 = Good effect / 4 = Very good effect

**Front - Exterior**

Serge 600 - pearl grey | gold (007004)

**Visual properties**

<b>Tv = Visual light transmittance</b>	7.80%
<b>Tuv = UV transmittance</b>	6.20%

**Solar energetic properties**

<b>As = Solar absorptance</b>	49.30%
<b>Rs = Solar reflectance</b>	40.80%
<b>Ts = Solar transmittance</b>	9.90%

**Fabric + glazing: G-factor**

	<b>G</b>	<b>Te</b>	<b>Qi</b>	<b>SC</b>
<b>Glazing A</b>	0.19	0.08	0.11	0.23
<b>Glazing B</b>	0.16	0.07	0.09	0.21
<b>Glazing C</b>	0.11	0.05	0.05	0.18
<b>Glazing D</b>	0.08	0.03	0.05	0.26

G = Total solar energy transmittance / Te = Direct solar transmittance / Qi = Secondary heat transfer factor / SC = Shading coefficient

**Thermal comfort G-factor = Total solar energy transmittance**

<b>Glazing A</b>	<b>Glazing B</b>	<b>Glazing C</b>	<b>Glazing D</b>
Class 2	Class 2	Class 3	Class 4

**Thermal comfort Qi-factor = Secondary heat transfer factor**

<b>Glazing A</b>	<b>Glazing B</b>	<b>Glazing C</b>	<b>Glazing D</b>
Class 2	Class 3	Class 3	Class 3

Class 0 = Very little effect / 1 = Little effect / 2 = Moderate effect / 3 = Good effect / 4 = Very good effect

**Back - Interior**

Serge 600 - pearl grey | gold (007004)

Visual properties	
<b>Tv = Visual light transmittance</b>	7.80%
<b>Tuv = UV transmittance</b>	6.20%

Solar energetic properties	
<b>As = Solar absorptance</b>	50.90%
<b>Rs = Solar reflectance</b>	39.20%
<b>Ts = Solar transmittance</b>	9.90%

Fabric + glazing: G-factor				
	<b>G</b>	<b>Te</b>	<b>Qi</b>	<b>SC</b>
<b>Glazing A</b>	0.50	0.08	0.41	0.58
<b>Glazing B</b>	0.50	0.07	0.43	0.66
<b>Glazing C</b>	0.44	0.05	0.39	0.75
<b>Glazing D</b>	0.27	0.03	0.24	0.86

G = Total solar energy transmittance / Te = Direct solar transmittance / Qi = Secondary heat transfer factor / SC = Shading coefficient

Visual comfort		
<b>Normal solar transmittance</b>	Class 3	Good effect
<b>Glare control</b>	Class 1	Little effect
<b>Privacy night</b>	Class 1	Little effect
<b>Visual contact with the outside</b>	Class 3	Good effect
<b>Daylight utilisation</b>	Class 1	Little effect

Thermal comfort G-factor = Total solar energy transmittance			
<b>Glazing A</b>	<b>Glazing B</b>	<b>Glazing C</b>	<b>Glazing D</b>
Class 1	Class 1	Class 1	Class 2

Thermal comfort Qi-factor = Secondary heat transfer factor			
<b>Glazing A</b>	<b>Glazing B</b>	<b>Glazing C</b>	<b>Glazing D</b>
Class 0	Class 0	Class 0	Class 1

Class 0 = Very little effect / 1 = Little effect / 2 = Moderate effect / 3 = Good effect / 4 = Very good effect

**Back - Exterior**

Serge 600 - pearl grey | gold (007004)

**Visual properties**

<b>Tv = Visual light transmittance</b>	7.80%
<b>Tuv = UV transmittance</b>	6.20%

**Solar energetic properties**

<b>As = Solar absorptance</b>	50.90%
<b>Rs = Solar reflectance</b>	39.20%
<b>Ts = Solar transmittance</b>	9.90%

**Fabric + glazing: G-factor**

	<b>G</b>	<b>Te</b>	<b>Qi</b>	<b>SC</b>
<b>Glazing A</b>	0.20	0.08	0.11	0.23
<b>Glazing B</b>	0.16	0.07	0.09	0.21
<b>Glazing C</b>	0.11	0.06	0.06	0.19
<b>Glazing D</b>	0.08	0.03	0.05	0.27

G = Total solar energy transmittance / Te = Direct solar transmittance / Qi = Secondary heat transfer factor / SC = Shading coefficient

**Thermal comfort G-factor = Total solar energy transmittance**

<b>Glazing A</b>	<b>Glazing B</b>	<b>Glazing C</b>	<b>Glazing D</b>
Class 2	Class 2	Class 3	Class 4

**Thermal comfort Qi-factor = Secondary heat transfer factor**

<b>Glazing A</b>	<b>Glazing B</b>	<b>Glazing C</b>	<b>Glazing D</b>
Class 2	Class 3	Class 3	Class 3

Class 0 = Very little effect / 1 = Little effect / 2 = Moderate effect / 3 = Good effect / 4 = Very good effect